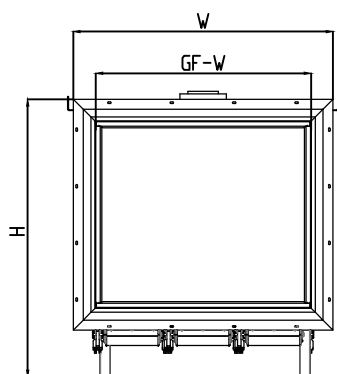
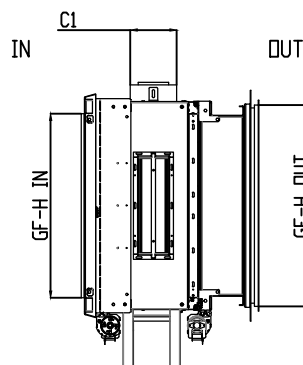




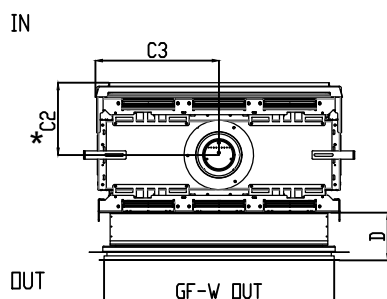
## 75X65 Indoor-Outdoor Double Glass - Flush



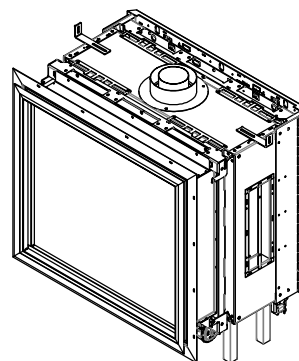
Outdoor Front View



Side View



Top View



Model	(H) Height	(W) Width	(D) fixed Depth	C1	C2	C3	Glass Opening	
							(GF) IN	(GF) OUT
75x65	38"	36 $\frac{1}{8}$ "	18 $\frac{1}{16}$ "	6 $\frac{7}{16}$ "	10 $\frac{1}{16}$ "	17 $\frac{1}{4}$ "	30 $\frac{5}{8}$ " W X 25 $\frac{9}{16}$ " H	32" W X 28" H

\* Dimensions includes  $\frac{1}{2}$ " lip ( for drywall)

\*\* Dimensions includes 2 X  $\frac{1}{2}$ " lip ( for drywall)

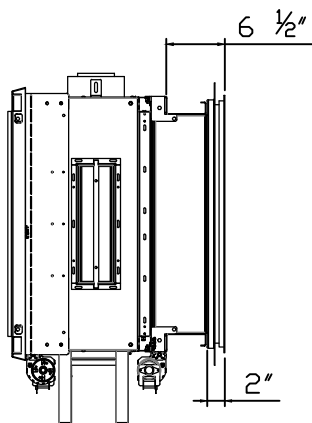
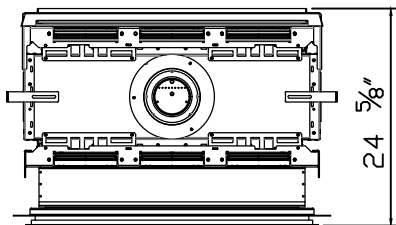
Note : 1. Drawings are not to Scale

2. All dimensions in inches

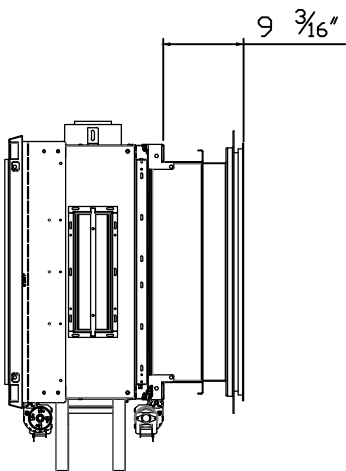
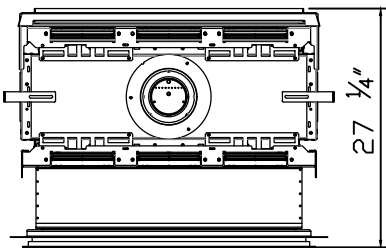


75X65 Indoor-Outdoor Double Glass - Flush

Minimum depth



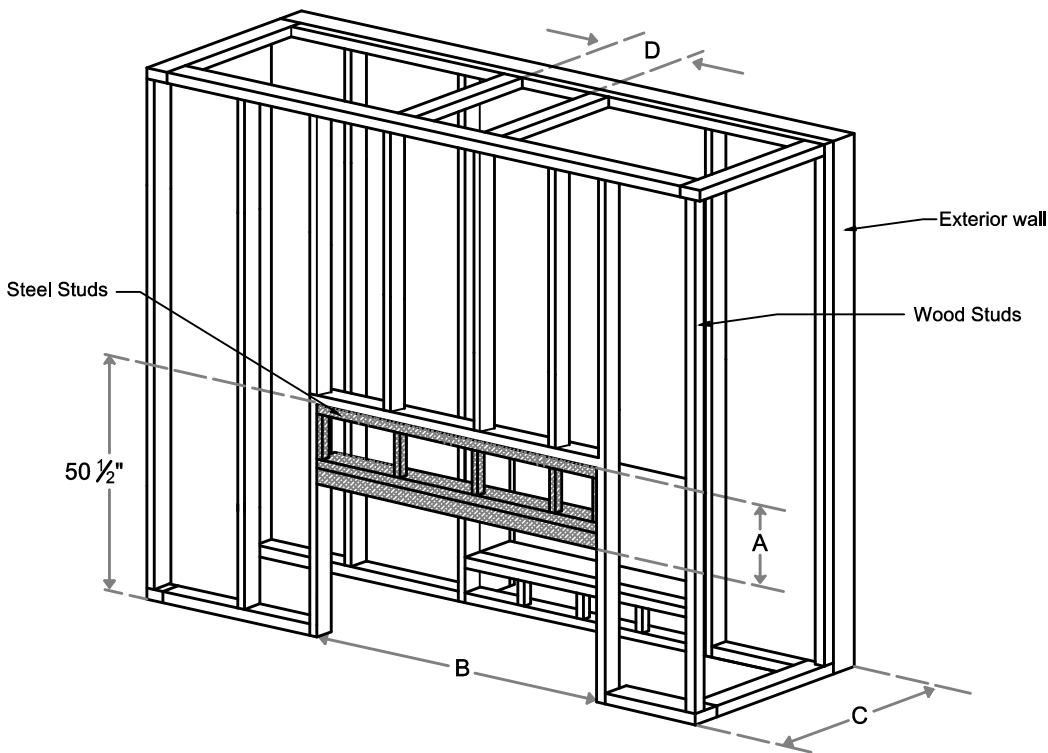
Maximum depth



Note : 1. Drawings are not to Scale  
2. All dimensions in inches



75X65 Indoor-Outdoor Double Glass - Flush

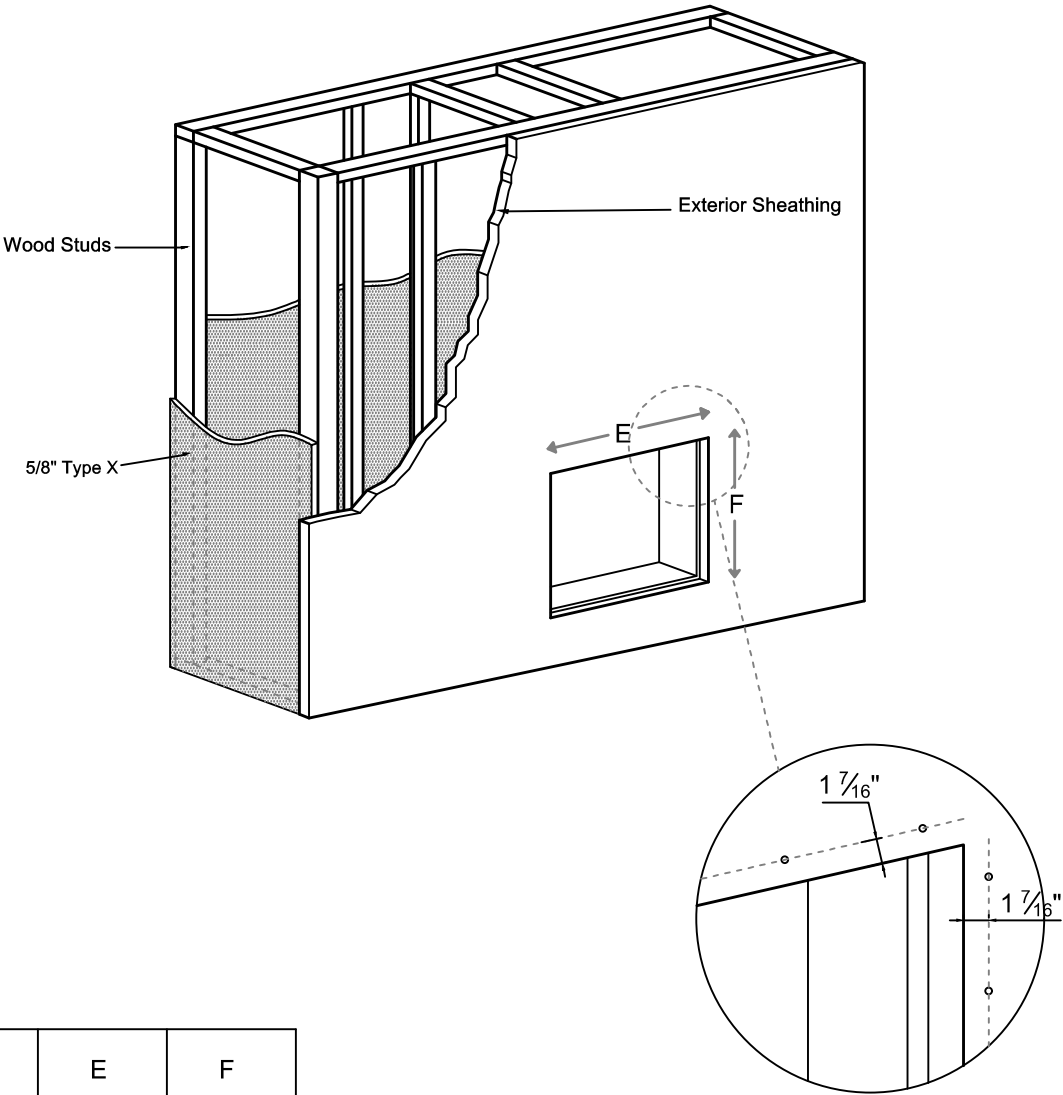


Model	A	B	C		D
			MIN	MAX	
75x65	18"	40 1/8"	24"	26 5/8"	Refer to pipe manufacturer's firestop dimensions

Note : 1. Drawings are not to Scale  
2. All dimensions in inches





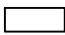
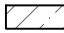


75X65 Indoor-Outdoor Double Glass - Flush



Model	E	F
75x65	32 1/4"	28 1/4"

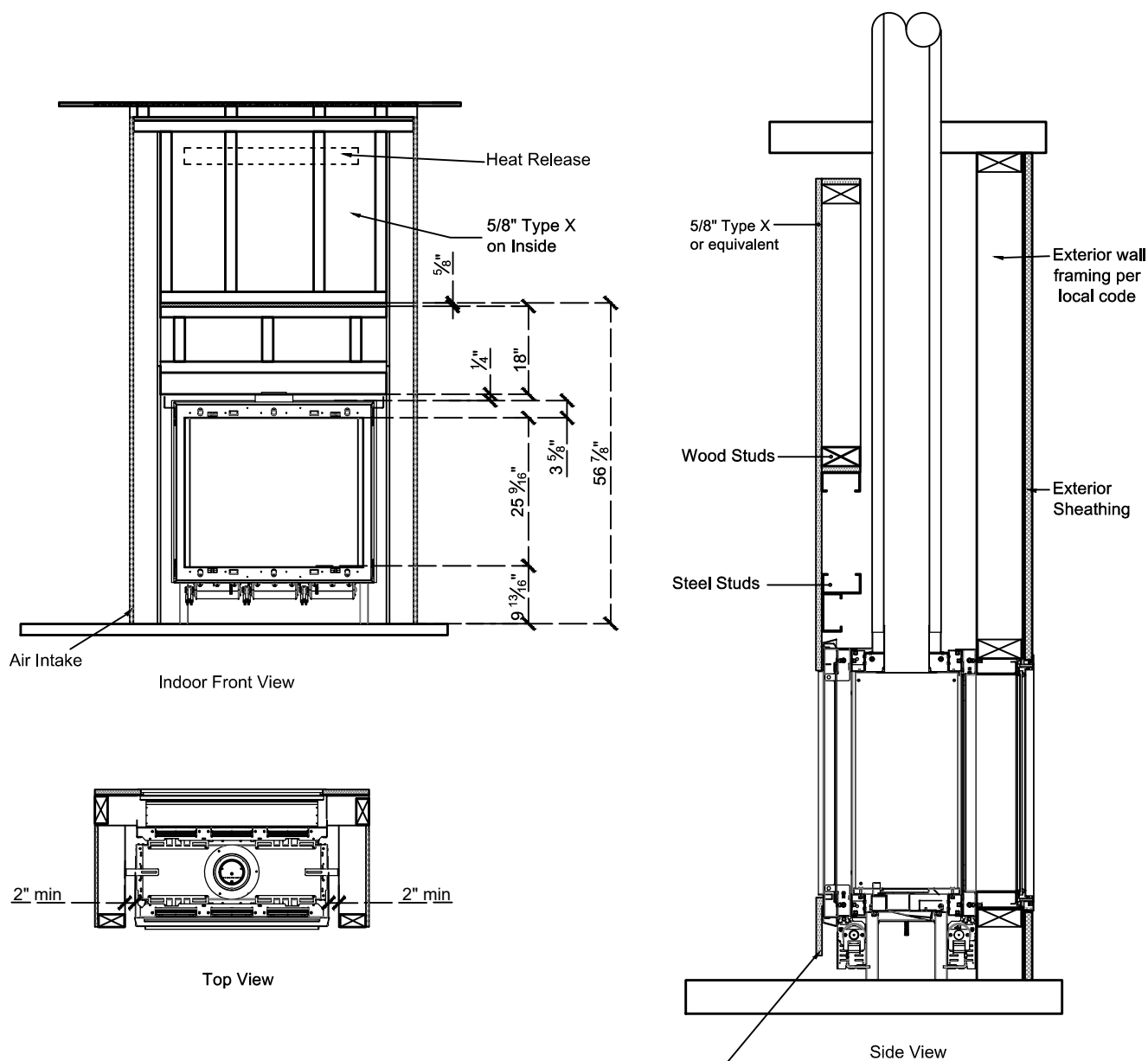
Note : 1. Drawings are not to Scale  
2. All dimensions in inches

LEGEND

-  5/8" Type X
-  Steel
-  Wood
-  Glass
-  Wood Studs
-  Steel Studs

**ORTAL**  
YOUR LIFE. YOUR FIRE

## 75X65 Indoor-Outdoor Double Glass - Flush



Clearance 2" from each side to non combustible material

The valve can be moved 36" - 40" from the center of the fireplace in any direction

**Note :** 1. Drawings are not to Scale  
2. All dimensions in inches