



**MUST READ BEFORE**

**FRAMING**



**IMPORTANT INFORMATION**



**Marquis Enclave 72**

**MQVL72NE2, MQVL72LPE2 – SINGLE SIDED  
(PROFLAME 2 IPI)**

**FRAMING**

**DIMENSIONS**

**SPECIFICATIONS**

**HEAT RELEASE REQUIREMENTS**

**QR LINK FOR  
PDF DIGITAL COPY  
OF SPECIFICATIONS:**

# MQVL72 Series - Vented Chase Requirements

**FIREPLACE CHASE MUST BE VENTED AT TOP AND BOTTOM-** Minimum **285** square inches free air opening at the top of the chase, and minimum **158** square inches free air opening at the bottom of the chase.

Top of Platform base must have minimum **710** Square inches free air opening.

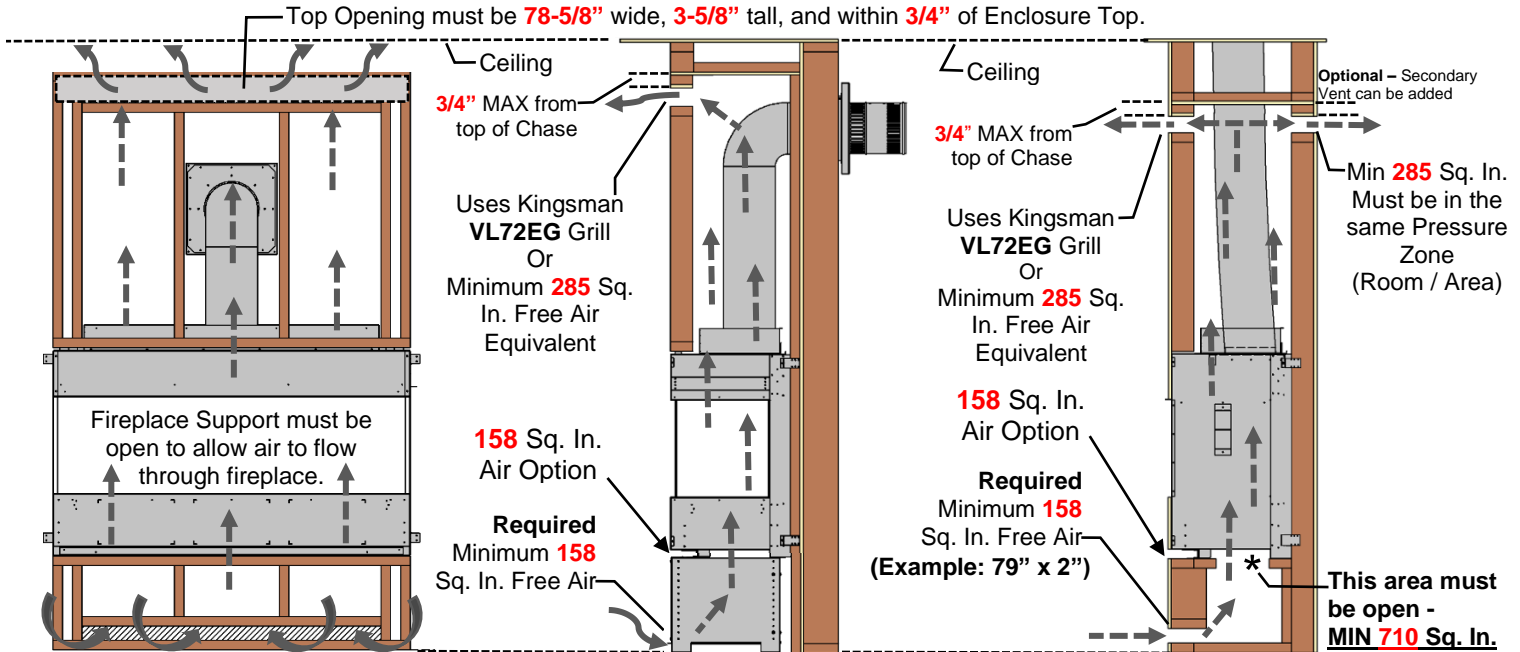
Chase Vent Openings **LARGER** than the required minimums **ARE** allowed and will reduce surface temperatures.

**HEAT CANNOT BE DISCHARGED INTO THE WALLS, FLOOR, OR CEILING.** Heat must exit through the required vented chase opening near the ceiling.

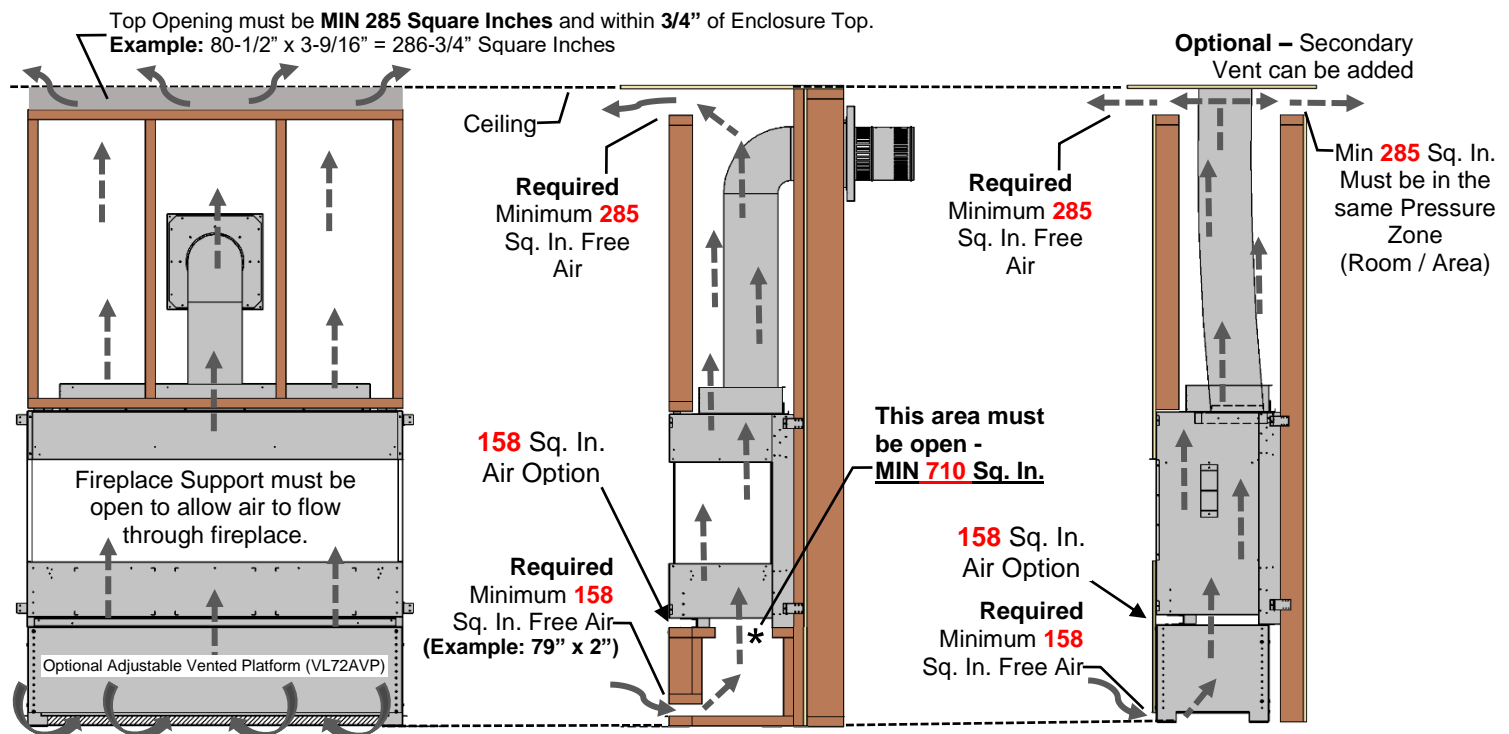
**ELECTRICAL WIRES IN CHASE MUST BE PROPERLY ATTACHED TO INSIDE WALL OF CHASE. DO NOT RUN WIRES ABOVE APPLIANCE.** Please follow the current CSA C22.1 Canadian Electrical Code or the National Electrical Code; ANSI/NFPA 70 when installed in the United States.

⚠ If using insulation in vented chase (i.e. for outside wall), wall board / drywall is required to support all insulation.  
Vented chase must be clean and free of all debris (i.e. loose insulation, pieces of wood, etc.)

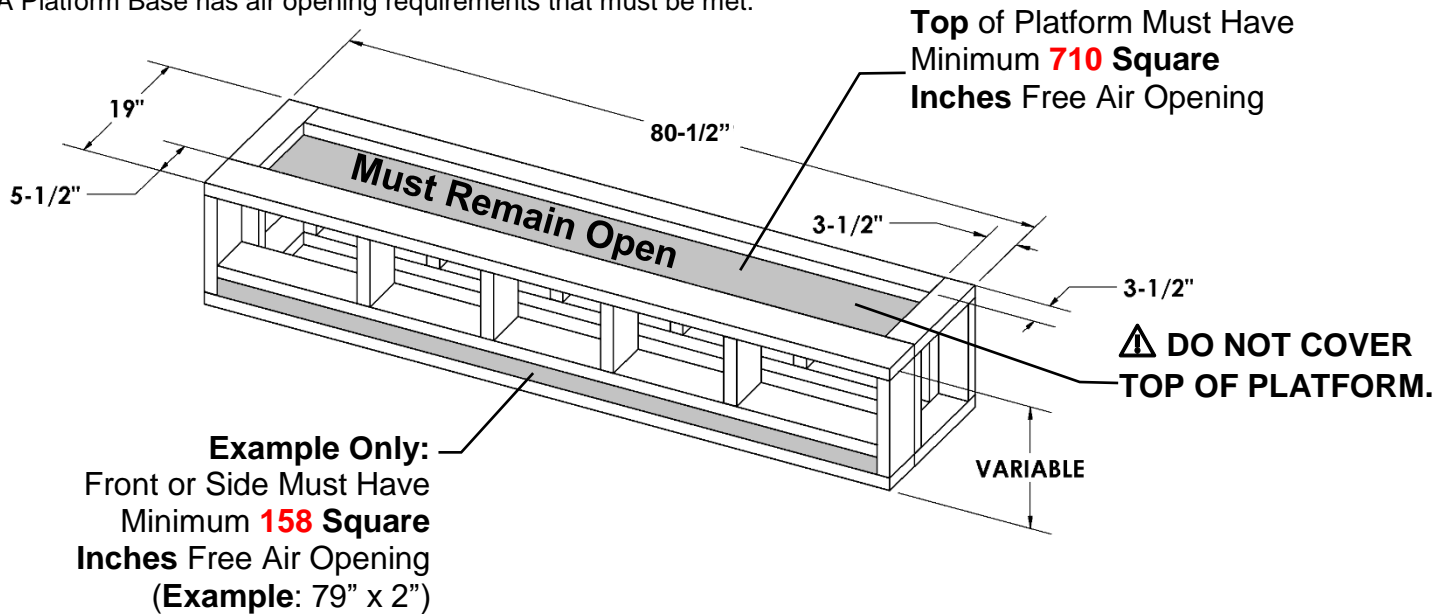
## Framing for Vented Chase - with Grills-



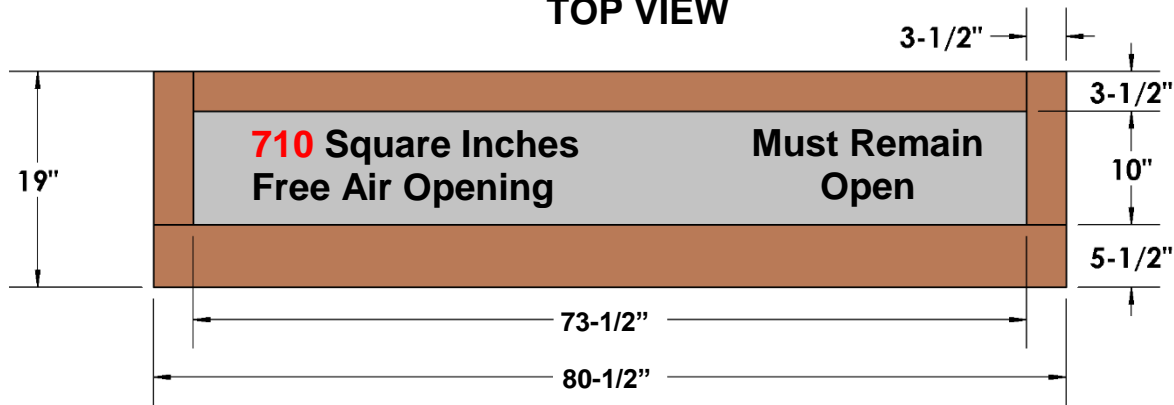
## Framing for Vented Chase with Openings - No Grills-



A Platform Base has air opening requirements that must be met.

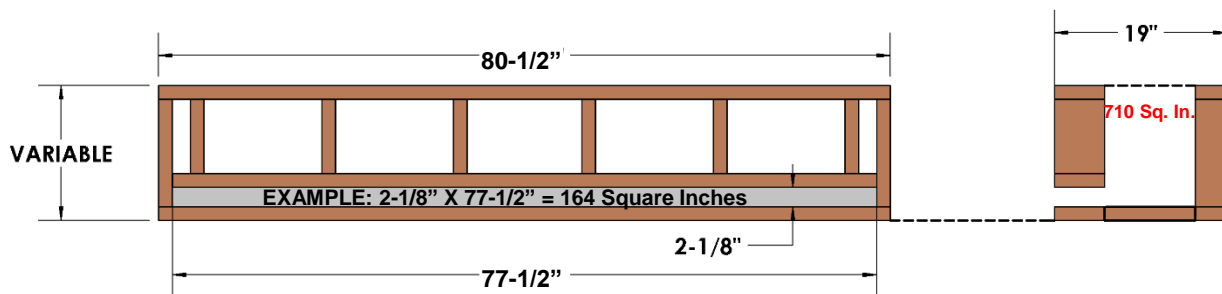


**TOP VIEW**



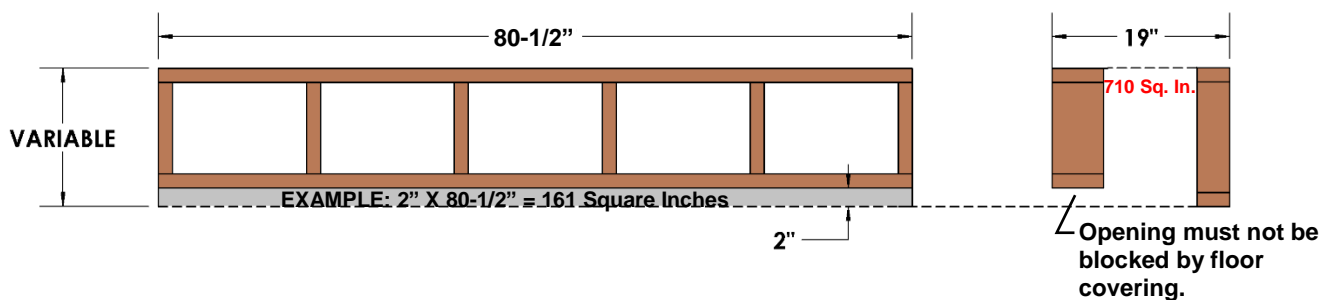
**EXAMPLE 1: FRONT VIEW**

**SIDE VIEW**



**EXAMPLE 2: FRONT VIEW**

**SIDE VIEW**



**⚠** Grill openings must be flush with or within 3/4" of enclosure top. This is to prevent excess heat from becoming trapped in the top of the chase. See installation section of manual.

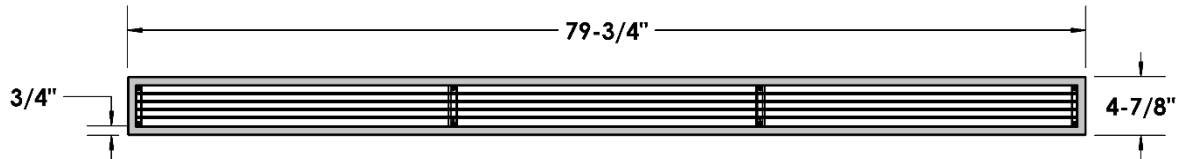
**Parts List:**

- [1] Louver Grill (ready to paint)
- [1] Outer Trim Grill Mount (ready to paint)
- [8] #6 Black Screws

This Grill Meets Minimum Opening Air Free Requirements.

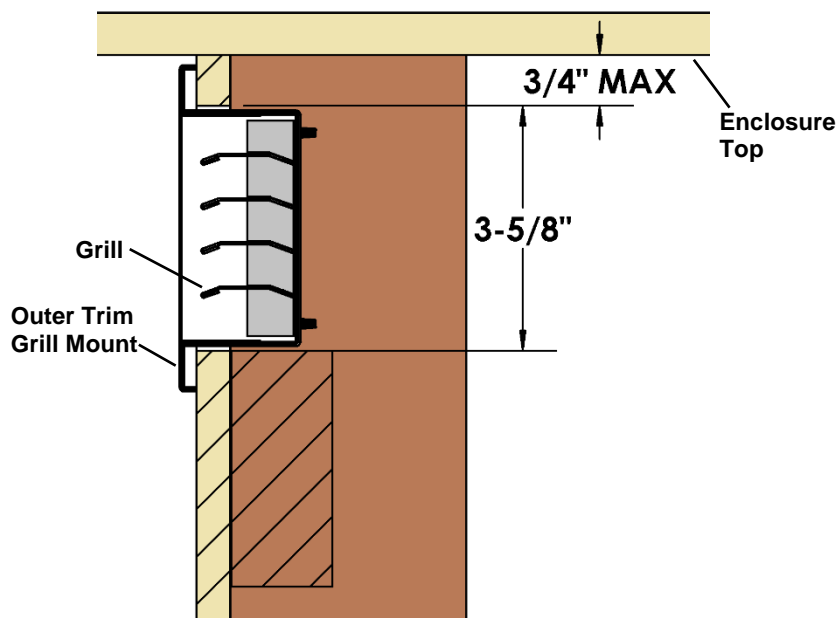
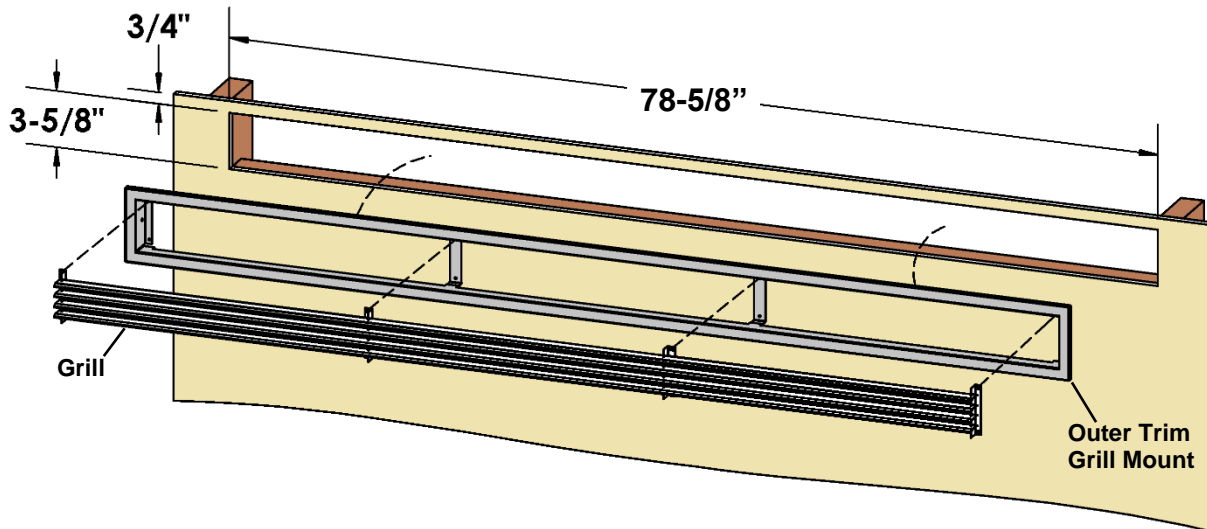
**Required Opening Dimensions:** 78-5/8" wide x 3-5/8" tall x 2" deep.

**Outer Trim Dimensions:** 79-3/4" x 4-7/8".



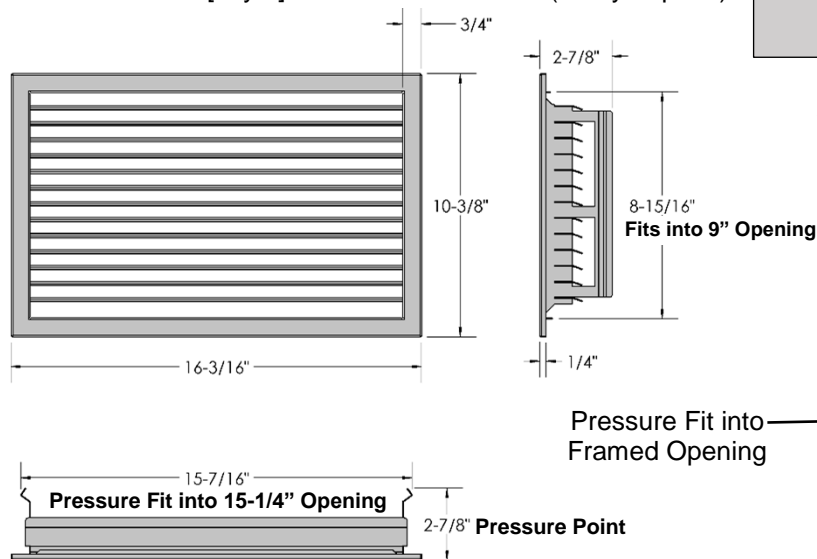
**Installation:**

1. Insert Outer Trim Grill Mount into opening and fasten to framing with a wood screw at each end.
2. Then insert Grill and attach with supplied #6 black screws. Do not over tighten screws

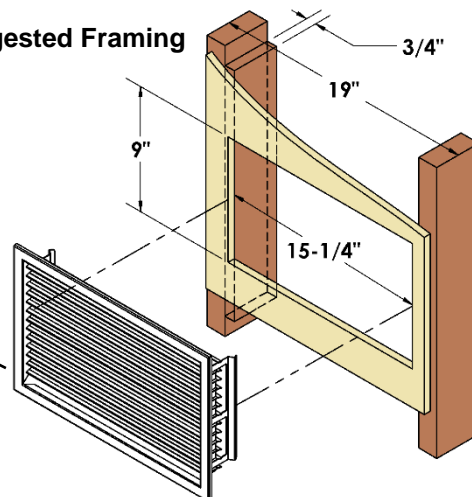


**Contents of Kit:** [Qty 2] Side Grill assemblies (ready to paint).

**⚠ Grill openings must be flush or within 3/4" of enclosure top. This is to prevent excess heat from becoming trapped in the top of the chase. See installation section of manual.**



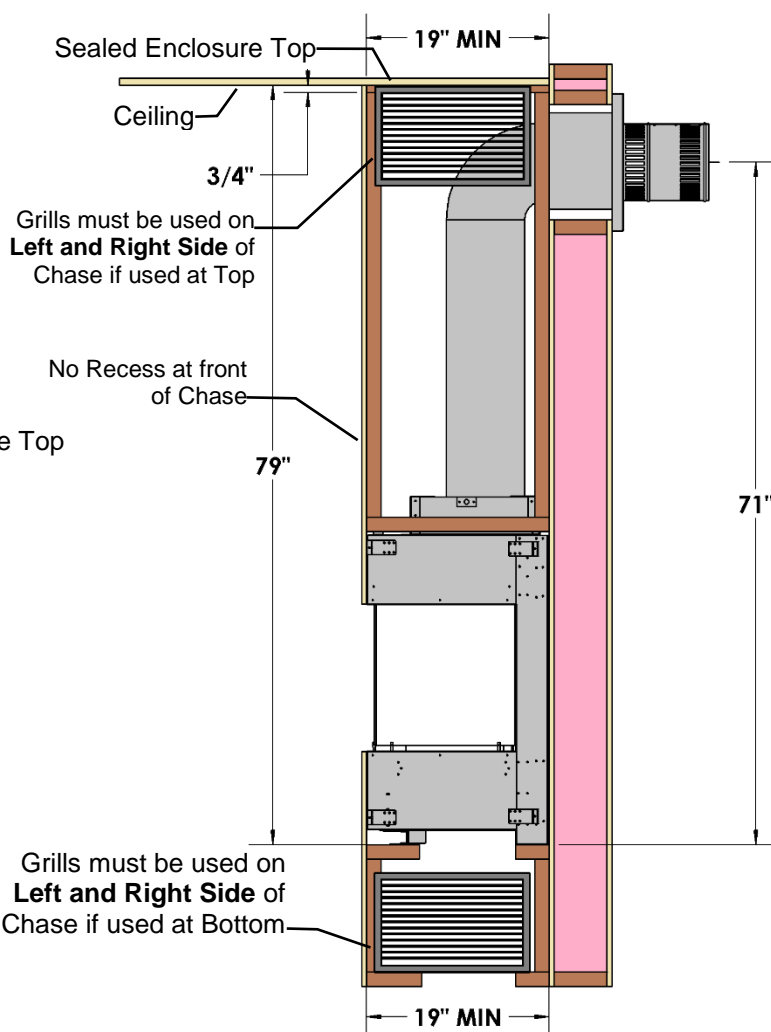
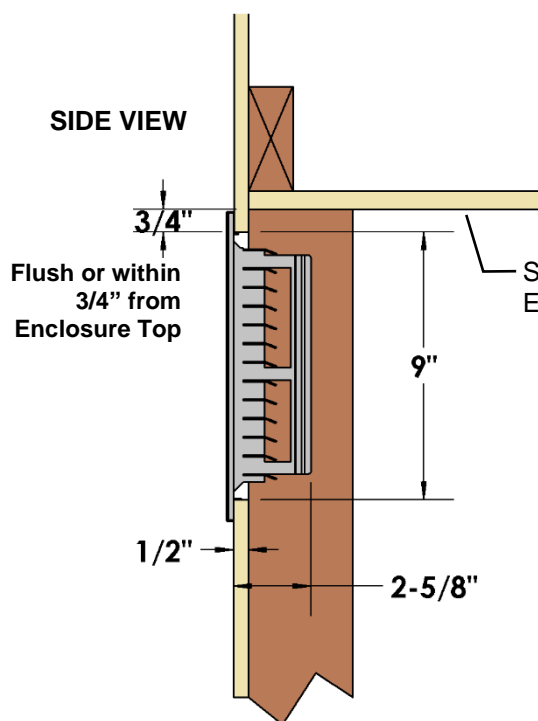
**Suggested Framing**



Can be used at Top and/or Bottom of Chase. VL72EGS Grills must be on **Left and Right Side** of chase if used at either location.

**For Top of Chase:**

**⚠ Grill Openings Must be flush or within 3/4" of Enclosure Top.**



**⚠ FIREPLACE CHASE MUST BE VENTED AT TOP AND BOTTOM-**

Not compatible with HDS System.

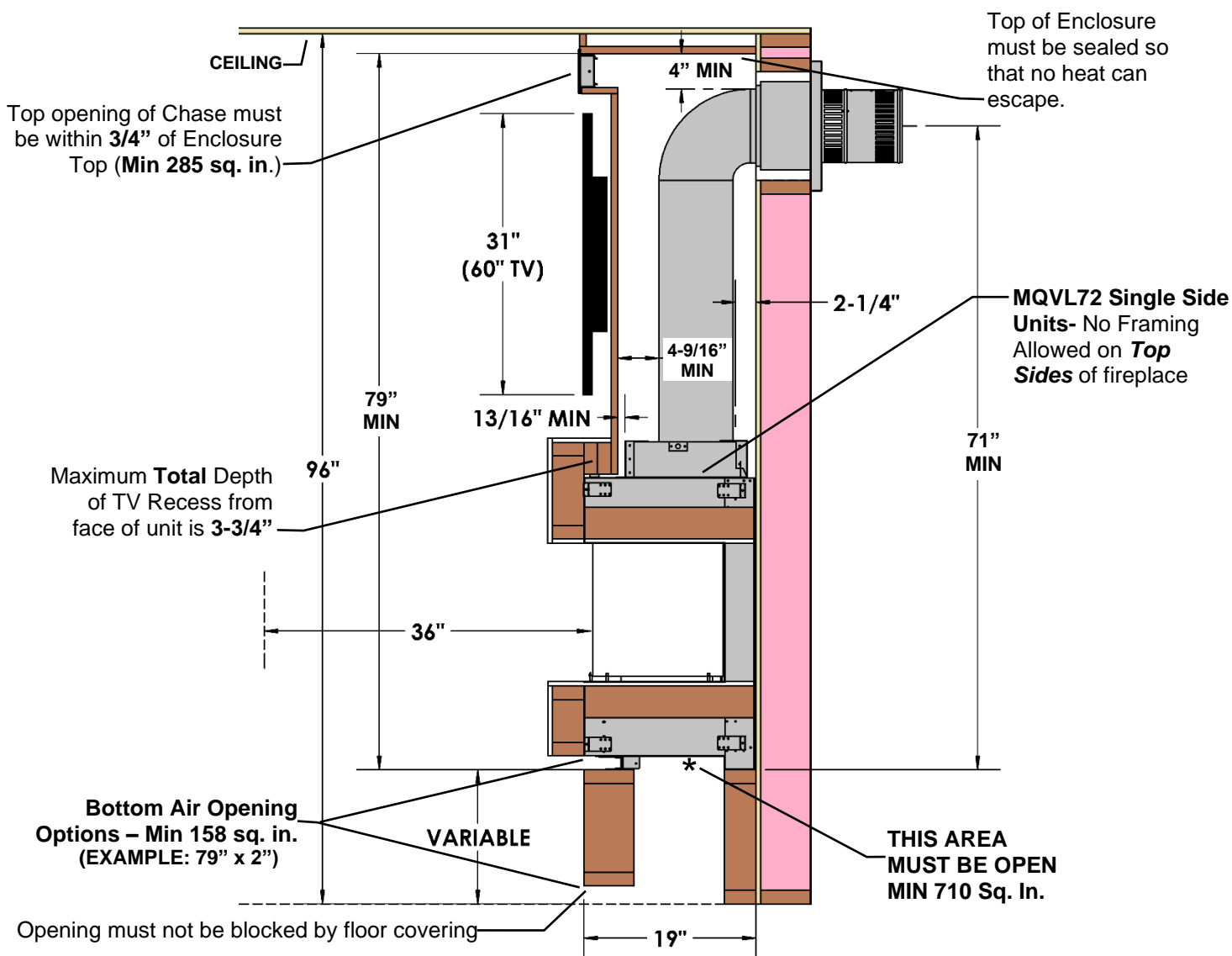
Front (Furniture, etc. from glass)	36" [92cm]
Side (Furniture, etc. from glass)	8-1/2" [21.6cm]
Side (from Stand-offs)	0" [0cm]
Back (from Stand-offs)	0" [0cm]
Floor	0" [0cm]
Minimum Ceiling Height (from bottom of fireplace)	79" [201cm]
Top (from Stand-offs)	0" [0cm]
Top of 90° Bend in minimum Enclosure of 79"	4" [10cm]
Top of 90° Bend in Enclosure over 79"	4" [10cm]
<b>VENTING SYSTEMS</b>	
Top of Horizontal Pipe	1/1/2" [3.8cm]
Side & Bottom of Horizontal Pipe	1" [2.5cm] All Vent Systems
Vertical Vent Pipe in Enclosure under 79"	2-1/4" [6cm] All Vent Systems
Vertical Vent Pipe in Enclosure over 79"	1" [2.5cm] All Vent Systems

**NOTE**

If using insulation in vented chase (i.e. for outside wall), wall board / drywall is required to support all insulation.

Vented chase must be clean and free of all debris (i.e. loose insulation, pieces of wood, etc.).

**MQVLBG72 SHOWN - SIDE VIEW**

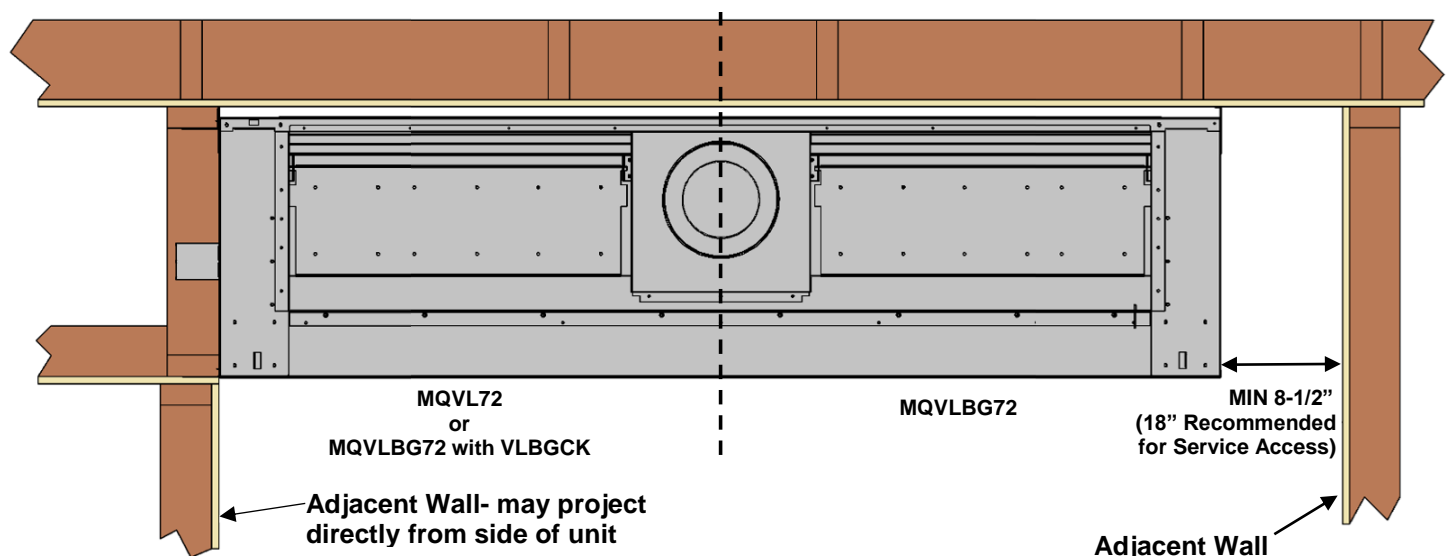
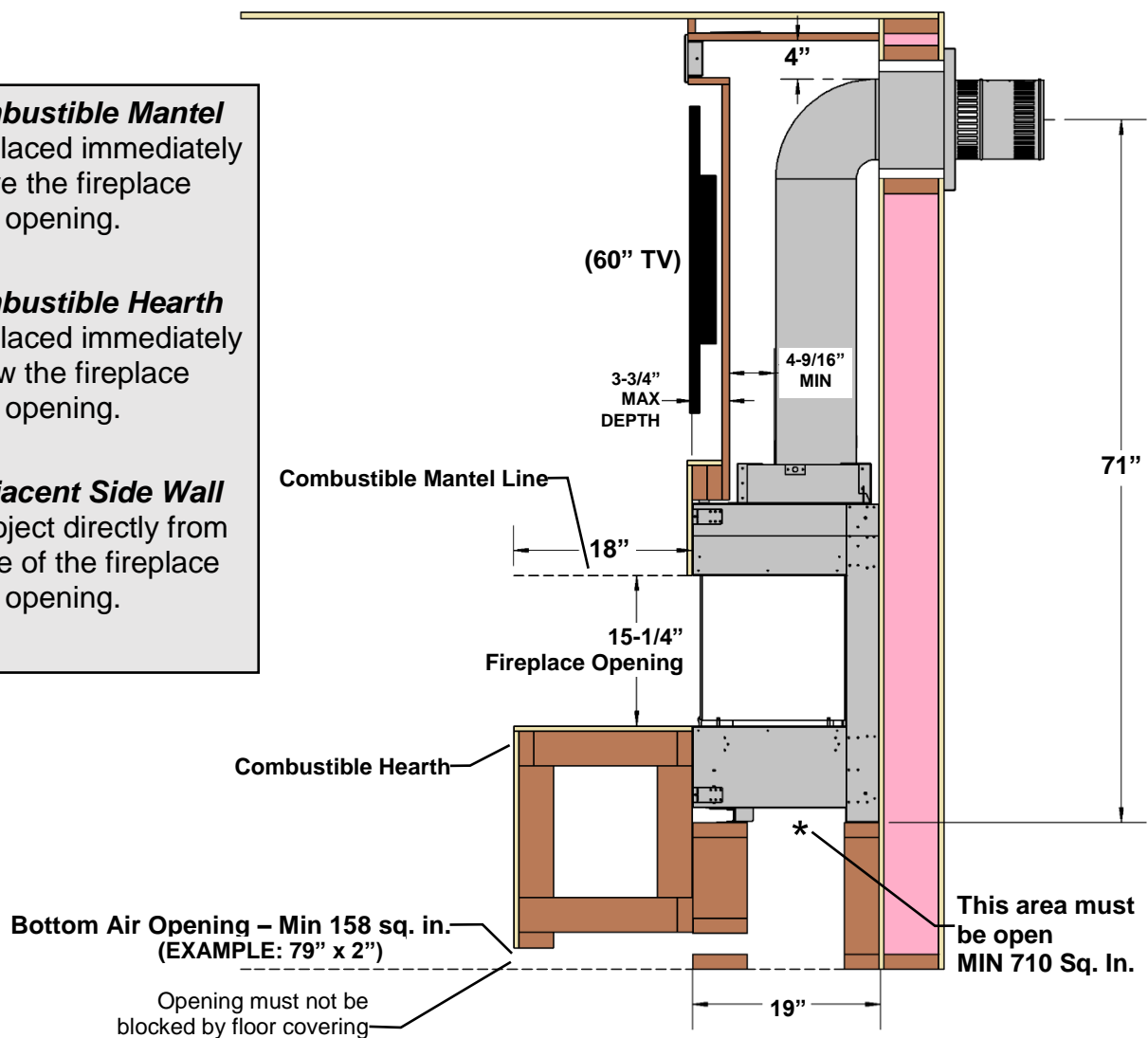


**SIDE VIEW (MQVLBG72 Shown)**

A **Combustible Mantel** can be placed immediately above the fireplace opening.

A **Combustible Hearth** can be placed immediately below the fireplace opening.

An **Adjacent Side Wall** may project directly from the side of the fireplace opening.



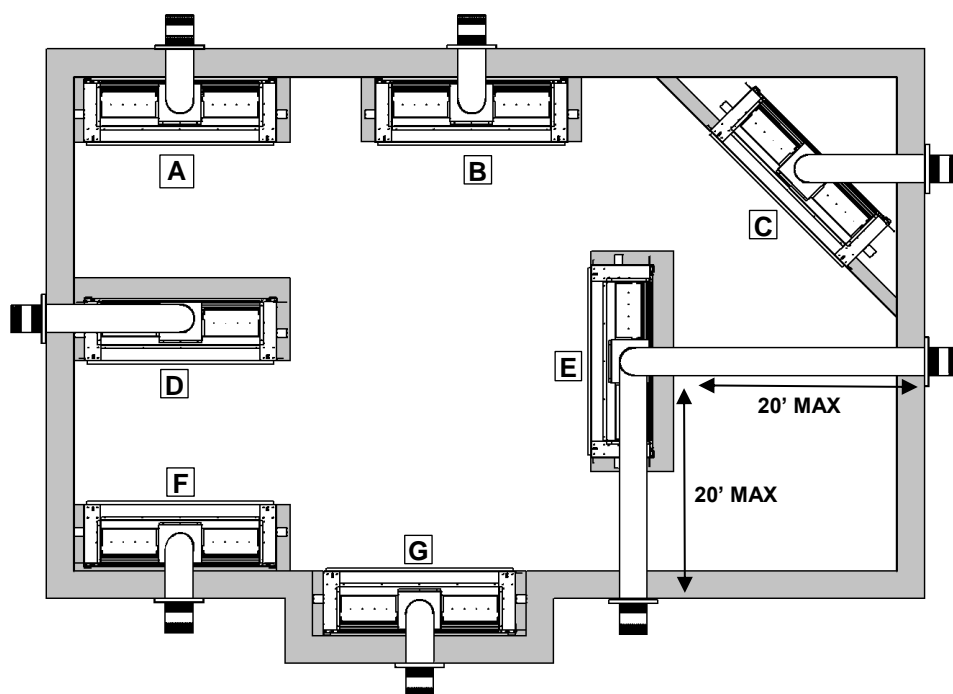
## MQVL72 - Single Side

## Locating Your Appliance

### LOCATION KEY:

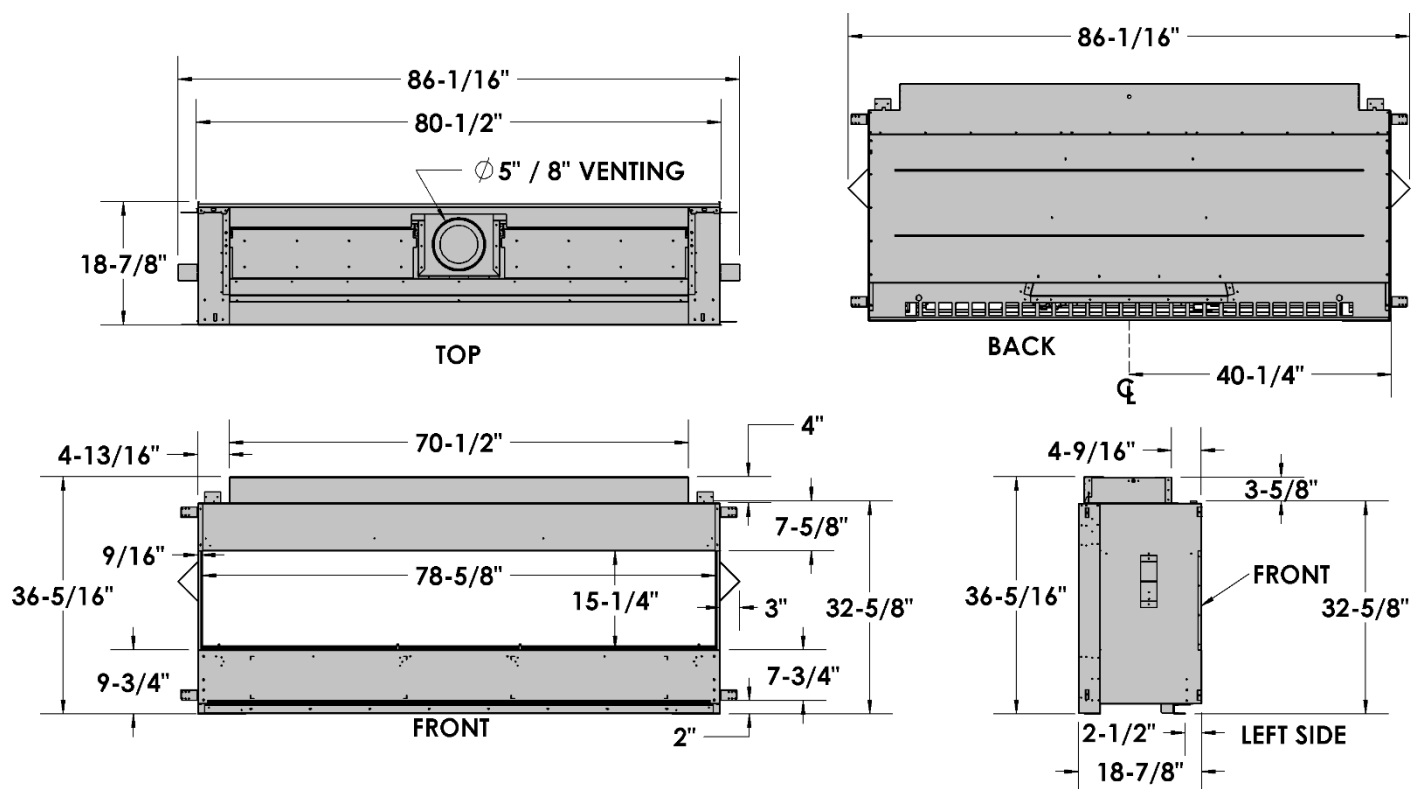
- A. Left Side Corner
- B. Flat on Wall
- C. 45° Corner
- D. As a Room Divider
- E. As an Island\*
- F. Right Side Corner
- G. Exterior Wall Chase

\*Island installation with a top vent is possible as long as the horizontal portion of the vent system does not exceed 20 feet (6.1 m).

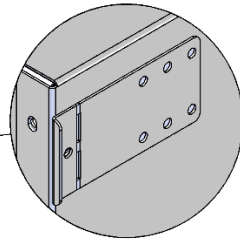
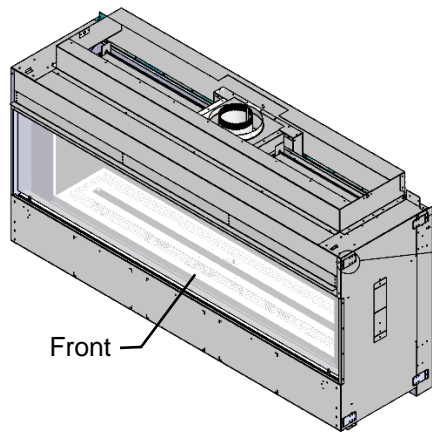


## MQVL72 - Single Side

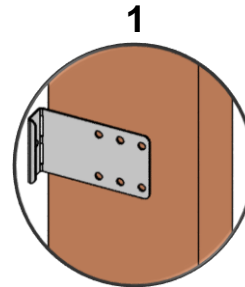
## Fireplace Dimensions



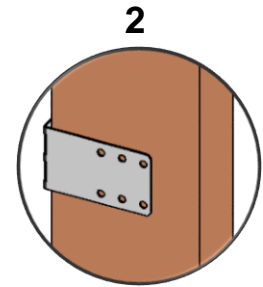




Flat  
(As Shipped)



1  
Pull up 90° for wall flush  
with fireplace face.

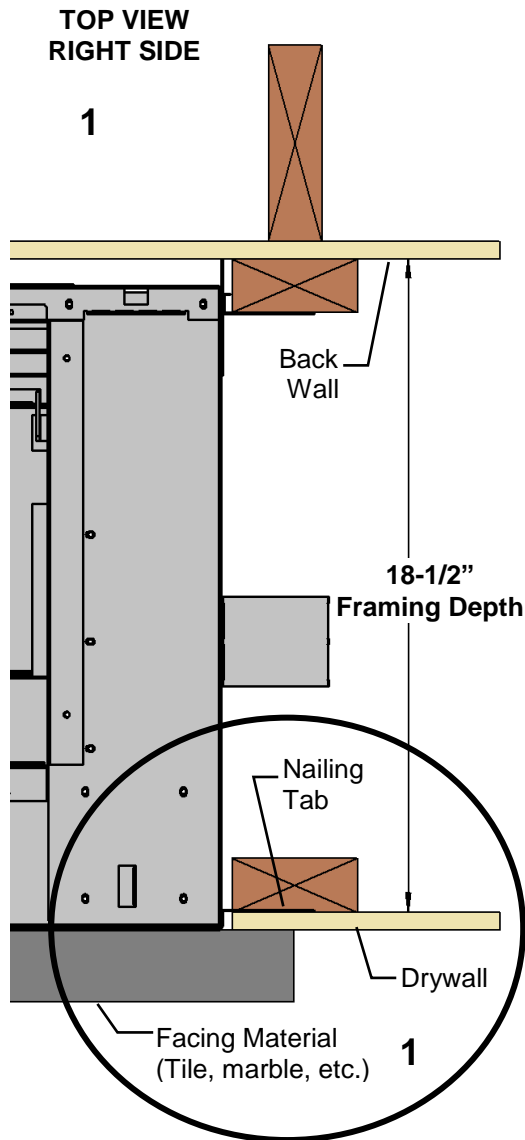


2  
Rotate 180° for framing flush  
with fireplace face.

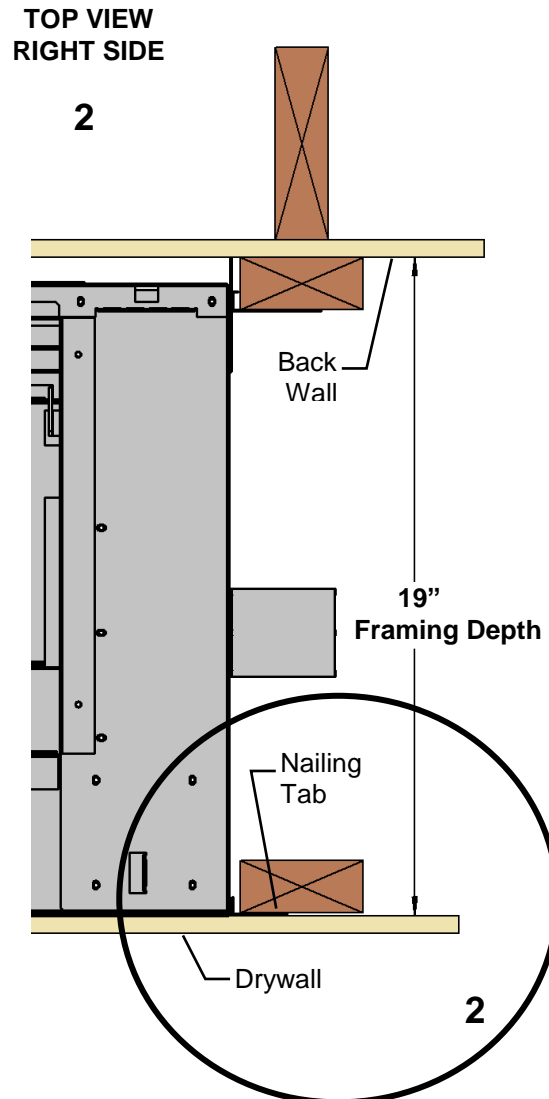
[Qty] 4 Nailing Tabs are located on each side of the front frame.  
**NOTE:** If using the rear nailing tabs for cantilevered chase etc., refer to the **Nailing Tab** page for **MQVLBG72 Bay Peninsula**.

**These Nailing Tabs can be used in two ways:**

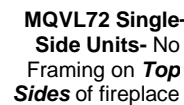
**1/2" Drywall Flush with Face of Fireplace** –Fireplace face and wall to be covered (e.g. Tile around Fireplace).



**Framing Flush with Face of Fireplace** –Finished wall surface will continue up to fireplace opening.



### TOP VIEW



**Optional 72AVP Adjustable Vented Platform shown.**

## MQVL72 – Single Side - Facing Requirements -

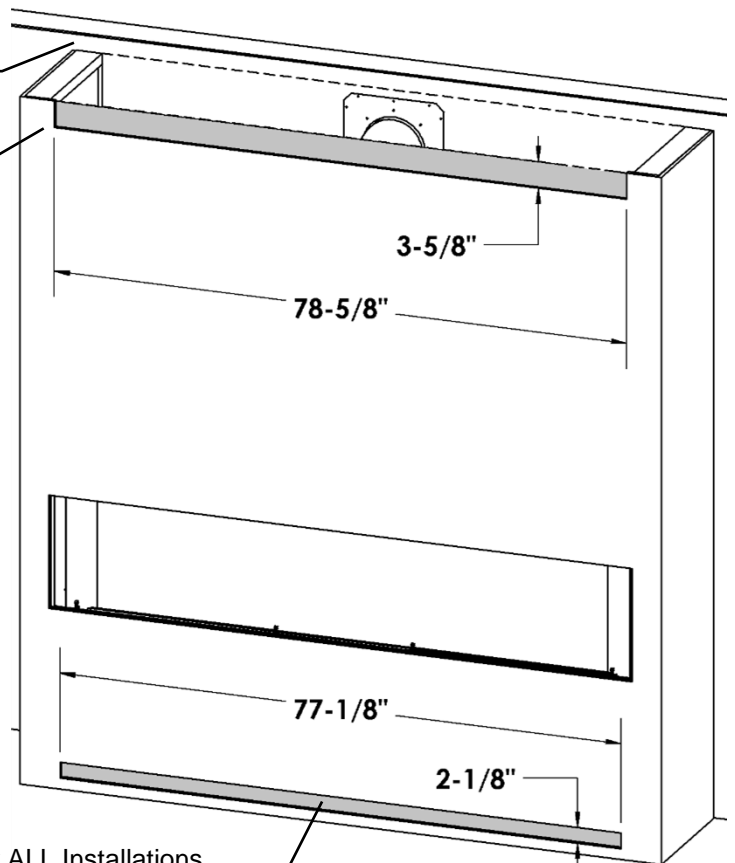
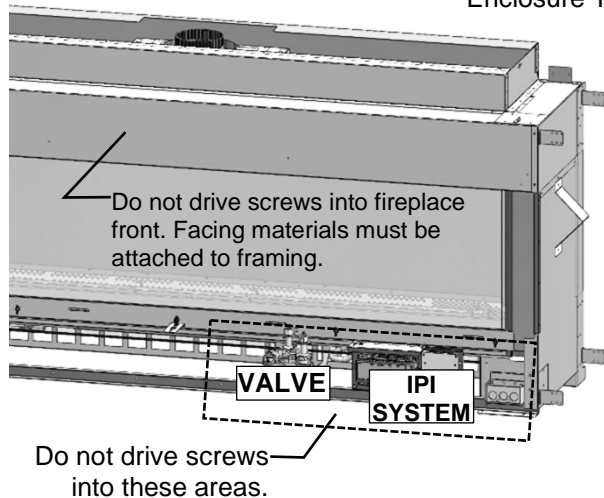
Unit may be covered with combustible material (i.e. drywall) up to the fireplace opening.

**VL72EG** or **VL72EGS** Grills can be used.

**NOTE:** If installing **VL72S1BL** or **SS Surround**: 5/8" Space is required around fireplace opening. Do not allow wall covering to come within this area.

**Option A:** Open Chase at Ceiling (MIN **285** Sq. In.)

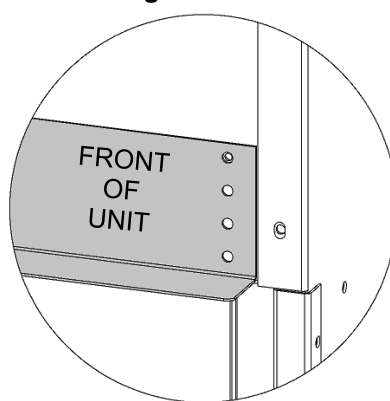
**Option B:** Vent Slot in Chase (MIN **285** Sq. In.) Flush or within 3/4" of Enclosure Top



Lower Vent Slot (MIN **158** Sq. In.) is REQUIRED for ALL Installations.  
(Example: 77-1/8" x 2-1/8")

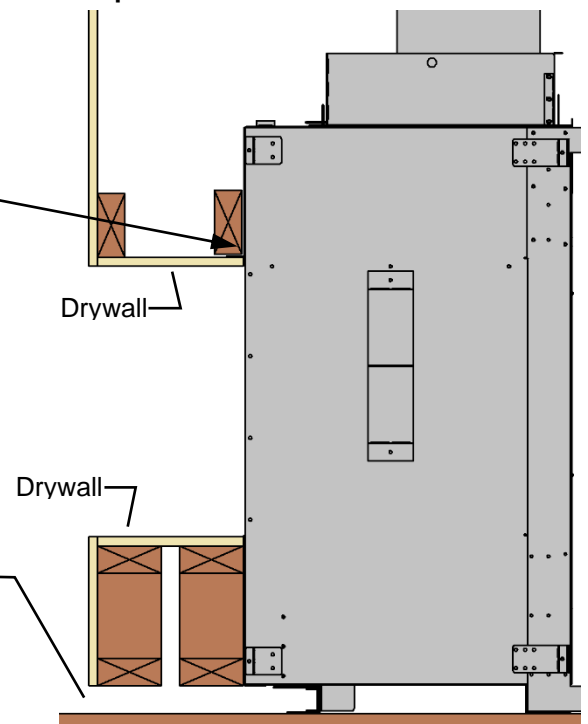
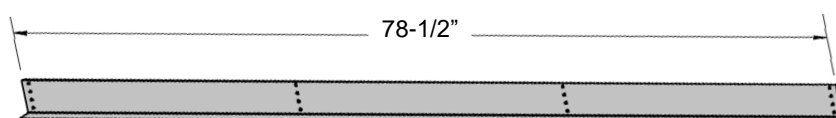
## MQVL72 - Single Side - Using Tile Lip

A **Tile Lip** is supplied for attachment above the fireplace opening only. This can be used as a standard tile edging or as a mount bracket for other surfaces like drywall or plywood. Set to desired height and attach through holes in face of fireplace. **Install before applying the finishing materials. For a complete Tile Lip Kit order 72VL-TLK.**



**NOTE:** If installing **VL72S1BL** or **SS Surround**: install Tile Lip using second hole from top, as shown. This will provide the required 5/8" clearance above opening.

**MIN 158 Square Inches Free Air Opening (Example: 79" x 2")**  
-Must not be blocked by floor covering



## MQVL 48/60/72 Single Sided Units- -Glass Front Removal / Installation-

### To remove Glass Front:

1. Remove Wing Nuts on the Upper Glass Retainer above the Glass Door Front and remove the Retainer.
2. Loosen Wing Nuts on the Lower Glass Retainer but do not remove.
3. Remove the Side Cover Panels.
4. Glass Door Front can now be lifted out of the fireplace.
5. Installation is the reverse of these steps. Tighten wing nuts on Glass Front until they are snug. Wingnuts should be finger-tight on Glass Front.

**NOTE:** Do not over tighten nuts as glass could break. Start at the center and work toward the ends of the glass.

**Use caution when working with glass. Wear gloves. Suction Cups Recommended.**

